

Supplementation alpha glycerol monolaurate during late gestation and lactation enhanced sow performance, ameliorated milk composition, and improved growth of suckling piglets

Longxian Li

China Agricultural University

Huakai Wang

China Agricultural University

Shuang Dong

China Agricultural University

Yongxi Ma (✉ mayongxi2005@163.com)

China Agricultural University

Research Article

Keywords: Alpha glycerol monolaurate, Fatty acid, Immune status, Microbiota, Sows, Suckling piglets

Posted Date: October 10th, 2022

DOI: <https://doi.org/10.21203/rs.3.rs-2116106/v1>

License: © ⓘ This work is licensed under a Creative Commons Attribution 4.0 International License.

[Read Full License](#)

Version of Record: A version of this preprint was published at Journal of Animal Science and Biotechnology on April 5th, 2023. See the published version at <https://doi.org/10.1186/s40104-023-00848-x>.

Abstract

Background: Physiological changes during lactation cause oxidative stress in sows, reduce immunity, and hamper the growth capacity of piglets. Alpha glycerol monolaurate (α -GML) has potential for improving the health of sows and the growth of suckling piglets.

Methods: Eighty sows were allocated randomly to four groups: basal diet and basal diets supplemented with 500, 1000, or 2000 mg/kg α -GML. The experiment started on d 85 of gestation and lasted until piglets were weaned on d 21 of lactation. The number of live-born piglets was standardized to 12 ± 1 per sow on day of parturition. On d 0 and 21 of lactation, body weight of piglets was measured and milk samples were obtained from sows, and serum samples and feces from piglets were obtained on d 21.

Results: Feed intake, backfat loss, and weaning estrus interval did not differ among the four groups of sows. Maternal α -GML supplementation increased ($P < 0.05$) the body weight of piglets at weaning. The IgA and IgG levels were greater ($P < 0.05$) in a quadratic manner in the milk of sows as dietary α -GML increased. Concerning fatty acid profile, C12:0, C15:0, C17:0, C18:2n6c, C18:3n3, C24:0, and C22:6n3 were higher ($P < 0.05$) in linear and quadratic manners in colostrum of sows-fed α -GML diets compared with the control sows. There was lower ($P < 0.05$) n-6: n-3 polyunsaturated fatty acid (PUFA) ratio in milk than in the control sows. Maternal α -GML increased the abundance of *Firmicutes* ($P < 0.05$) and decreased the abundance of *Proteobacteria* ($P < 0.05$) of piglet fecal microbiota.

Conclusions: Dietary supplementation with α -GML improved milk immunoglobulins and fatty acids of sows, thereby improving the health and growth of piglets.

Background

Litter size and weaning weights are the main parameters that define productivity and profitability on pig barn [1]. Improvements in swine genetics [2], management [3], and nutrition [4] have increased the number of weaned piglets per litter [5], which are associated with larger litter size, pre-weaning survival and weaning weight. Three-quarters of fetal weight gain occurs in the last quarter of pregnancy, during which sufficient nutrient is required to meet the needs of the sow [6]. It is important to provide adequate nutrients or nutritional interventions through late pregnancy and lactation.

Studies have found that dietary supplementation of fatty acids during late pregnancy and/or lactation can increase the overall litter growth and pig weaning weights [7], reduce body weight loss during lactation and shorten the weaning-to-estrus interval [6]. Furthermore, the type and amount of fat in daily feed rations also affect the sow milk yield and the milk fatty acids profile [8]. Alpha glycerol monolaurate (α -GML) is an α -monoglyceride of medium-chain fatty acid (MCFA) lauric acid and is recognized by the US Food and Drug Administration (FDA) as a Generally Recognized as Safe (GRAS) food emulsifier [9]. As a natural and edible lipid, α -GML possesses multiple pharmacological and biological activities, including excellent antibacterial and antiviral properties. The strong antibacterial properties of GML make it widely used in food preservation and medicine [10–12]. Moreover, in vitro study showed that GML

inhibited the infectivity and transmission of the African swine fever virus (ASFv) in feed [13]. A recent study reveals that GML can be used as an effective feed additive to improve animal growth performance and quality control [14]. Our previous study has demonstrated that dietary 1000 mg/kg α -GML supplementation significantly reduces diarrhea rate, improves intestinal morphology, nutrient digestibility, antioxidant capacity, and immune status, and ameliorates gut microbiota in weaned piglets [15]. It is reported that the addition of 2000 mg/kg GML in a low protein diet could improve the intestinal tight junction barrier function and immune status of weaned piglets [16]. The present study aimed to determine the effect of maternal α -GML supplementation during gestation and lactation on the reproductive performance of sows, the fatty acids profile of milk, and the serum immunoglobulins and fecal microbiota of piglets, to validate the hypothesis that α -GML would improve milk quality in lactating sows, thereby improving neonatal health and growth, and α -GML might be an effective feed additive in antibiotics-free diet for swine production in China.

Methods

The experimental protocol of this study was following the Guide for the Care and Use of Laboratory Animals prepared by the Institutional Animal Care and Use Committee of China Agricultural University. This experiment was conducted in the FengNing Swine Research Unit of China Agricultural University (Academician Workstation in Chengde Jiuyun Agricultural and Livestock Co., Ltd., Hebei, China). The product α -GML was provided by Zhejiang Libiduo Biotechnology Co. Ltd and contained 85% α -GML.

Animals and experimental design

Fifth or sixth parity sows ($n = 80$; Landrace \times Large White) with similar backfat (BF) thickness were assigned randomly to one of four treatments: control diet (corn-soybean basal diet, $n = 20$), 500 mg/kg α -GML diet (basal diet + 500 mg/kg α -GML, $n = 20$), 1000 mg/kg α -GML diet (basal diet + 1000 mg/kg α -GML, $n = 20$), and 2000 mg/kg α -GML diet (basal diet + 2000 mg/kg α -GML, $n = 20$). Each treatment (Table 1) consisted of a gestation and a lactation diet and were formulated to meet nutritional requirements of late gestation (day 85 of gestation to parturition) and lactation sows according to the recommendations by the National Research Council [17]. Sows were housed individually in stalls from day 85 to day 107 of gestation on partially slatted concrete floors and ingested a total of 2.5 kg diet daily (9:00 and 15:00). Then, sows were moved to farrowing stalls on day 107 of gestation and ingested 2.76 kg of daily diet (9:00 and 15:00) from day 107 of gestation to parturition. Sows were offered approximately 0.5 kg on the first day after farrowing and then fed daily feed allotment was increased 1.0 kg more every day until maximum feed intake was reached. When maximum feed intake was achieved, sows were allowed ad libitum access to feed. Throughout the experiment, sows and piglets were allowed ad libitum access to water. On the day of farrowing (day = 0), litter size was adjusted to 12 ± 1 piglets by cross-fostering within dietary treatment. The ambient temperature in the farrowing room for sows was maintained at 20-23°C. Heat lamps were used to provided heat to neonatal pigs. The suckling piglets underwent routine tooth clipping, tail removal, subcutaneous iron dextran injections, and immunization. During the entire experiment, sow's milk was the sole food source for suckling piglets. Feed intake of the

sows was recorded daily to allow calculation of average daily feed intake (ADFI) during the entire lactation period, and piglets were weighed at birth and day 21 of lactation. The growth performance and survival rates of sucking piglets were determined. Backfat thickness (P2, 6 cm from the midline at the head of the last rib) of sows at day 110 of gestation and day 21 of lactation was measured using an ultrasonic device (Piglog105; SFK Technology A/S, Herlev, Denmark) to assess the body condition of sows.

Collection of colostrum and milk from sows

Six sows from each group were randomly selected by injection of 10 IU oxytocin via the ear vein to induce milk letdown into the teat canal on day 0 (colostrum) and 21 (milk) of lactation. Milk samples were collected from different mammary glands (front, middle, and rear), and equal volumes (15 mL) of milk from three glands of a sow were mixed, and the samples were stored at -20°C fridge for subsequent analysis.

Collection of blood samples from piglets

Blood samples (2 mL) were obtained from six randomly piglets each group via the jugular vein using non-heparinized vacutainer tubes on day 21 of lactation. Serum samples were harvested for each blood sample after centrifugation at $3,000 \times g$ for 15 min, and were stored at -20°C fridge for subsequent analysis.

Collection of fecal samples from piglets

Six piglets each group were used to collect fresh feces by the rectal palpation method on day 21 of lactation. Fecal samples were immediately frozen in liquid nitrogen and placed at -80°C fridge for subsequent analysis.

Analysis of immunoglobulin in colostrum and milk

The concentrations of immunoglobulin A (IgA), immunoglobulin G (IgG), and immunoglobulin M (IgM) in colostrum and milk were determined according to Che et al. [18]. Briefly, the optical density values of IgA, IgG and IgM standards were measured at 340 nm, 700 nm, and 340 nm using a UV-2401PC (Shimadzu Co., Japan UV-VIS recording spectrophotometer), and the concentration of each immunoglobulin was calculated by standard curve.

Analysis of fatty acid profiles in colostrum and milk

For analysis of fatty acid composition, milk samples (1 g) were transferred to a 25 mL Teflon-lined tube and neutralized with 4 mL of n-Hexane:isopropanol (3:2) and 2 mL of sodium sulfate (6.67%). After centrifugation at $5,000 \times g$ for 10 min, all supernatants were transferred to a 20 mL hydrolysis tube, 200 μL of C11:0 internal standard was added, and dry with mixed nitrogen. Add 4 mL of hydrochloric acid methanol (3 mol/L) solution to the hydrolysis tube and tighten the cap, then reflux in a water bath at

80°C for 2 h. After the water bath, 5 mL of 7% K₂CO₃ and 3 mL of hexane were added to the hydrolytic tube, mix by vortexing, centrifuged at 1,000 × *g* for 1 min, and about 1 mL of the upper liquid was filtered into a 1.5 mL glass bottle with a filter (filter pore size of 0.22 μm). Finally, the fatty acid methyl ester dissolved in the supernatant was analyzed by gas chromatography-mass spectrometry using Agilent 7890 B (Agilent Technologies, Palo Alto, CA) gas chromatograph and Agilent Technologies (60 m × 250 μm × 0.25 μm) column. Fatty acids were expressed as the proportion of each individual fatty acid to the total amount of all fatty acids in the sample. n-3 polyunsaturated fatty acid (PUFA), n-6 PUFA, and n-6: n-3 PUFA ratio were calculated.

Analysis of immunoglobulin in serum

Concentrations of IgA, IgG, and IgM were analyzed using ELISA kits validated for swine (CUSABIO Biotech Company, Wuhan, China) according to methods described [6].

Fecal microbial flora composition

Total feces bacterial DNA (n = 6) was extracted according to the manufacturer's instructions of the Qiagen QIAmp DNA stool extraction kit (Qiagen). The V3-V4 hypervariable regions of bacterial 16S rRNA were amplified by a PCR system using universal primers 338F (5'-ACTCCTACGGGAGGCAGCAG-3') and 806R (5'-GGACTACHVGGGTWTCTAAT-3'). The PCR amplification procedures were set in ABI GeneAmp® 9700 system (ABI, USA) as follows: predenaturation (95°C, 3 min), amplification (95°C, 30 s; 55°C, 30 s; 72°C, 45 s; a total of 27 cycles), extended (72°C, 10 min) [19]. The paired-end reads of pooled purified amplicons were sequenced on the Illumina MiSeq PE300 platform (Illumina, San Diego, CA). The original sequences were demultiplexed, quality filtered, trimmed, and denoised using Trimmomatic and merged according to the overlapping relationship by FLASH software (v1.2.11, <http://ccb.jhu.edu/software/FLASH/index.shtml>) [20]. The operational taxonomic units (OTUs) with 97% similarity threshold were clustered Using UPARSE (version 7.1, <http://drive5.com/uparse/>) and their representative sequence categorized and analyzed by the RDP Classifier (<http://rdp.cme.msu.edu/>) against the Silva (SSU128) 16S rRNA database with a confidence threshold of 70% [17]. The composition and structure of fecal microbiota were analyzed according to the standardized OUT with the QIIME software (version 1.8.0) [21]. The linear discriminant analysis (LDA) effect size (LEfSe) algorithm was applied to identify specific taxa from phylum to genus level among each group of samples.

Statistical analysis

All data were analyzed using the one-way ANOVA procedure of SPSS statistical software (SPSS 26.0, IBM SPSS Company, Chicago, USA). Each sow (litter) or piglet was considered as the experimental unit. Data were evaluated for normality and homoscedasticity by the Shapiro-Wilk and Levene's tests, respectively. The linear and quadratic effects of different α-GML levels were determined using orthogonal polynomials for reproductive performance, concentrations of immunoglobulin and fatty acid composition of sows in milk, and serum antioxidant capacity and immunoglobulin levels of piglets. The bacterial community at the phylum, genus, and species level were analyzed by non-parametric factorial Kruskal-Wallis test and

unpaired Wilcoxon Comparison test. The data were expressed as mean \pm SEM, and differences were considered significant at $P < 0.05$, and the tendency was declared with $0.05 \leq P < 0.10$.

Results

Reproductive performance

There were no differences ($P > 0.05$) in ADFI of sows and weaning estrus interval among the four groups (Table 2). Backfat thickness decreased with advanced lactation as sows mobilizing their body reserves to meet the requirement of milk production. However, the backfat thickness of sows did not differ ($P > 0.05$) among groups. Litter size at weaning and average weight at birth of piglets did not differ ($P > 0.05$) among treatments. Litter weight at birth and weaning, and average weight at weaning of piglets increased in a quadratic manner ($P < 0.05$) as dietary α -GML content increased.

Concentrations of immunoglobulin of sows in colostrum and milk

The IgA and IgG levels in the colostrum and IgA levels in the milk increased in a quadratic manner ($P < 0.05$), whereas the IgG level in the milk increased in linear and quadratic manners ($P < 0.05$) as dietary α -GML content increased (Table 3). No differences ($P > 0.05$) in concentrations of IgM in colostrum and milk were detected among the four groups of sows.

Fatty acid profiles of sows in colostrum and milk

Fatty acid profiles in colostrum and milk of sows were summarized in Table 4 and 5. In colostrum, C12:0, C15:0, C17:0, C18:2n6c, C18:3n3, C24:0, and C22:6n3 increased ($P < 0.05$) in linear and quadratic manners, C20:3n6 increased in quadratic manner and C20:5n3 increased in linear manner ($P < 0.05$), C8:0 decreased ($P < 0.05$) in linear manner as dietary α -GML content increased. In milk, C12:0, C18:3n3, and C20:5n3 increased ($P < 0.05$) in linear and quadratic manners, C22:0 increased ($P < 0.05$) in linear manner, and C23:0, C24:0, and C24:1 increased ($P < 0.05$) in quadratic manner as dietary α -GML content increased. Moreover, C8:0, C10:0, and C14:0 decreased ($P < 0.05$) in linear and quadratic manners, and C14:1 decreased ($P < 0.05$) in quadratic manner, and C20:3n6 decreased ($P < 0.05$) in linear manner in dietary α -GML supplemented sow milk compared with the control sows.

Serum immunoglobulin levels of piglets

Effects of α -GML supplementation on levels of IgA, IgG, and IgM in the serum of piglets are summarized in Table 6. Concentrations of IgG and IgM in serum from piglets tended to increase ($P < 0.10$) in quadratic manner, whereas the concentration of IgA tended to increase ($P < 0.10$) in linear manner.

Fecal microbiota community of piglets

There were 760, 724, 726, and 690 OTUs obtained from piglets in 0, 500, 1,000, and 2,000 mg/kg α -GML groups, respectively, of which 511 were common OTUs (Fig. 1A). Besides, a total of 128 unique OTUs

were detected within the four groups. principal coordinate analysis (PCoA) showed significant clustering characteristics of fecal microbial composition between control and α -GML groups (Fig. 1B). The α -diversity indexes including Sobs, Chao, Shannon, and Simpson indexes were not affected by dietary treatments (Fig. 1C-F). At the phylum level, *Firmicutes* and *Bacteroides* were the dominant phyla in the fecal microbial composition of suckling piglets representing approximately 90%, followed by *Proteobacteria* and *Actinobacteriota* (Fig. 2A). The relative abundance of *Firmicutes* was increased ($P < 0.05$), while the relative abundance of *Proteobacteria* was decreased ($P < 0.05$) in piglets from α -GML-fed sows (Fig. 2B). At the family level, *Lactobacillaceae* and *Oscillospiraceae* were the dominant families, followed by *Lachnospiraceae*, *Ruminococcaceae*, *Peptostreptococcaceae*, *Erysipelotrichaceae*, *Bacteroidaceae*, *Christensenellaceae*, *Clostridiaceae*, et al (Fig. 2C). The relative abundance of *Lactobacillaceae* was increased ($P < 0.05$), while the relative abundance of *Bacteroidaceae*, *Enterobacteriaceae*, *Enterococcaceae*, *Eggerthellaceae*, *Marinifilaceae*, and *norank_o__Clostridia_vadinBB60_group* were decreased ($P < 0.05$) in piglets from α -GML-fed sows (Fig. 2D).

Discussion

Sows mobilizing body fat and protein to provide precursors and energy for milk production when nutrient intake fails to meet energy requirements [22]. This results in a negative effect on the litter growth and subsequent reproductive performance [23]. In the present study, the lactation feed intake and back loss were not affected by α -GML supplementation, which was consistent with Świątkiewicz et al. [24], who observed that supplementation with 0.3% medium-chain triglyceride (MCT) in sows did not affect their backfat loss. However, Gatlin et al. [25] observed that supplementing with 10% MCT for lactating sows decreased feed intake, in comparison with the control group. The explanation may be that lipid supplementation improved the caloric intake of lactating sows, and the voluntary feed intake of lactation sows was affected by the energy density of the diet [26, 27]. Dietary α -GML also did not affect the weaning estrus interval, which may be related to the better recovery of the body condition of sows in this experiment. In the present study, maternal α -GML supplementation improved the growth performance of piglets compared with the control group, which was consistent with Gatlin et al. [25], who observed that the growth performance was increased in piglets from MCT-fed sows. It is supposed that this improvement was related to the antibacterial effects, potent anti-inflammatory, or energy density of the diets [14, 28].

The immune system of newborn piglets is not fully developed, which completely depends on antibodies in the mammary secretions of sows, thus affecting their immunological and physiological development. IgA is the principal immunoglobulin in milk, while IgG predominates in colostrum [32]. Concentrations of IgG in piglets depend on the amount of available colostrum [30], the amount of colostrum ingestion [31], IgG absorption in the piglet's gut [31], and the amount of IgG in colostrum. IgA in milk provides local passive immunity in the gastrointestinal tract of piglets [29]. In the present study, greater IgA and IgG levels in colostrum and milk of sows-fed α -GML diets, which was consistent with Chen et al. [6], who observed that supplementing the sows' diet with 7.75 g coated MCFA/kg increased the contents of IgA,

IgG, and IgM in colostrum. The increased immunoglobulin in colostrum and milk further explains the improved growth performance and immunity in suckling piglets from sows-fed diets containing α -GML. Previous study has shown that GML could alter the lipid dynamics of human T cells, leading to a reduction in cytokine production, such as IL-2, IFN- γ , and TNF- α [32]. Therefore, the increased IgA and IgG levels may be related to the change in the inflammatory environment induced by α -GML.

The present experiment confirmed that the fatty acid profile in sow's colostrum was influenced by the dietary α -GML. Previous studies have shown that the impact of dietary fatty acid composition during the last gestation and lactation on fatty acid profile of colostrum and milk [7, 8]. However, this study is the first one using α -GML for sow nutrition. We found that dietary α -GML inhibited *de novo* lipogenesis of the mammary gland (lower percentage of the sum of C8:0, C10:0, C12:0, and C14:0 in milk), which consistent with published studies in sows [33]. Consistent with the experimental diet treatment, C12:0 in colostrum and milk was higher from sows-fed α -GML than the control sows. As the sole food source, α -GML from milk for piglets can improve growth performance by improving intestinal morphology and immune status and ameliorating gut microbiota, this was confirmed by our previous study [15]. The odd-chain fatty acids (C15:0, C17:0) mainly exist in milk of ruminants and are mostly synthesized by bacteria [34]. Goat mammary gland can also synthesize these odd-chain fatty acids [35]. Few studies have reported the presence of odd-chain fatty acids in sow milk. In this study, we found that in sow colostrum, C15:0 and C17:0 take about 0.39% of all fatty acids, and α -GML improved their proportion to 0.40–0.47% in colostrum. In contrast to ruminants, these precursor volatile fatty acids (VFA) are not present in sufficient amounts to produce milk fatty acids. Mo et al. [36] showed that GML could enhance the content of fecal short-chain fatty acids (SCFAs) by anticolic effect. Propionate can enhance odd-chain fatty acids production, because they can be used to generate propionyl-CoA, which is the precursor for the biosynthesis of odd-chain fatty acids [37]. Thus, it cannot be excluded that a shift towards propionate production, under a different balance of gut microbiota, due to α -GML addition could contribute to these variations in odd number fatty acids. The fatty acid composition of the milk reflects the nutritional status of sows during gestation and lactation as previously described [38]. The inclusion of α -GML in the sow diets was reflected in the higher proportions of C18:2n6c, C18:3n3, C20:3n6, C20:5n3, and C22:6n3 in colostrum. Moreover, C18:3n3 and C20:5n3 were higher in milk in sows-fed α -GML diets than in the control sows. The presence of higher levels of these fatty acids elevated the proportion of n-3 PUFA and n-6 PUFA in colostrum and n-3 PUFA in milk. This result indicates dietary α -GML supplementation may promote the absorption of fatty substances in sows [9]. Higher ratio of n-6: n-3 may limit the production of anti-inflammatory eicosanoids derived from eicosapentaenoic acid [39]. Maternal diets with varying n-6: n-3 PUFA ratios affected the antioxidant status, immune cell eicosanoid responses, immunoglobulins, fatty acids composition, and growth performance [40, 41]. Previous studies have shown the lower ratio of n-6: n-3 PUFA could improve the growth performance in weaned piglets [42] and reproductive function in boar [43]. In the present study, the lower n-6: n-3 PUFA ratio in milk also contributes to the growth of suckling piglets.

The gut microbiota in the gastrointestinal tract has numerous roles benefiting the host, such as the production of vitamins, maintenance of normal functions of the intestinal villi, and regulation of the

immune responses [44]. *Firmicutes* and *Bacteroidota* play key roles in creating and maintaining an anaerobic environment in the intestinal tract of piglets with a relative abundance approximately of 90% in this study, which was consistent with the previous report on suckling piglets [45]. *Desulfovibrio* in *Proteobacteria* has been shown to further induce increased intestinal permeability and destruction of intestinal barrier structure by reducing sulfate to sulfide and inhibiting the growth of intestinal epithelial cells [46, 47]. In the present study, maternal α -GML supplementation increased the abundance of *Firmicutes* and decreased the abundance of *Proteobacteria* in the feces of suckling piglets, which indicated that α -GML can modulate the structure and diversity of intestinal microbiota in suckling piglets. The *Lactobacillaceae* family, belonging to the *Firmicutes* phylum, is considered a beneficial microbe to improve growth performance by modulating gut health and immunity [48]. Our results showed that *Lactobacillaceae* was increased in piglets from α -GML-fed sows, which could explain the improvement of growth and immunity. *Enterobacteriaceae* and *Enterococcus*, as aerobic or facultative anaerobic bacteria, mainly settle in the intestinal tract of piglets on days 1 and 3 [49]. With the further development of the piglet intestinal flora, the anaerobic environment formed in the piglet intestinal tract is favorable for obligate anaerobic bacteria such as *Bacteroides*, *Lachnospira*, and *Clostridium*, and the formation of a bacterial community structure with *Firmicutes* and *Bacteroidetes* as dominant bacteria accompanied by a decrease in the abundance of *Proteobacteria* [49]. In this study, a higher abundance of *Enterobacteriaceae* and *Enterococcaceae* in the feces of piglets in the control group that only appeared in the intestinal tract of piglets in the early stage of birth, which to some extent indicated that the intestinal development of piglets was not perfect, and there was a higher risk of opportunistic pathogens infection. Together, these findings indicated that the maternal α -GML could influence the composition of the intestinal microbiota in suckling piglets.

Conclusions

In conclusion, α -GML supplementation could improve immunoglobulins and fatty acid composition in milk, thus enhancing growth performance and ameliorating intestinal microbe in suckling piglets.

Abbreviations

α -GML: Alpha glycerol monolaurate; ADFI: Average daily feed intake; ASFv: African swine fever virus; FDA: Food and Drug Administration; GRAS: Generally Recognized as Safe; IgA: Immunoglobulin A; IgG: Immunoglobulin G; IgM: Immunoglobulin M; LDA: Linear discriminant analysis; MCFA: Medium-chain fatty acid; MCT: Medium-chain triglyceride; OTUs: Operational taxonomic units; PCoA: Principal coordinate analysis; PUFA: Polyunsaturated fatty acid; SCFAs: Short-chain fatty acids; VFA: Volatile fatty acid

Declarations

Author Contributions

The authors' responsibilities were as follows: YXM and LXL designed the research; LXL and HKW conducted the research; LXL, HKW, NZ, and TZ analyzed the data; HKW wrote the manuscript; YXM, HKW, and LXL revised the manuscript; all authors have read and approved this manuscript.

Funding

This work was funded by the National Key Research and Development Program of China (No. 2021YFD1300300).

Ethics Statement

The animals used for this research were approved by the Institutional Animal Care and Use Committee of China Agricultural University.

Consent for publication

Not applicable.

Conflict of Interest

The authors declare they have no competing interests.

References

1. Ocepek M, Rosvold EM, Andersen-Ranberg I, Andersen IL. Can we improve maternal care in sows? Maternal behavioral traits important for piglet survival in loose-housed sow herds. *J Anim Sci*. 2017;95(11):4708–17. <https://doi.org/10.2527/jas2017.1725>.
2. Kemp B, Da Silva CLA, Soede NM. Recent advances in pig reproduction: Focus on impact of genetic selection for female fertility. *Reprod Domest Anim*. 2018;2:28–36. <https://doi.org/10.1111/rda.13264>.
3. Gerritsen R, Soede NM, Langendijk P, Taverne MA, Kemp B. Early embryo survival and development in sows with lactational ovulation. *Reprod Domest Anim*. 2008;43(1):59–65. <https://doi.org/10.1111/j.1439-0531.2007.00855.x>.
4. Yuan TL, Zhu YH, Shi M, Li TT, Li N, Wu GY, et al. Within-litter variation in birth weight: impact of nutritional status in the sow. *J Zhejiang Univ Sci B*. 2015;16(6):417–35. <https://doi.org/10.1631/jzus.B1500010>.
5. Schmitt O, Baxter EM, Lawlor PG, Boyle LA, O'Driscoll K. A Single Dose of Fat-Based Energy Supplement to Light Birth Weight Pigs Shortly After Birth Does Not Increase Their Survival and Growth. *Anim (Basel)*. 2019;9(5):227. <https://doi.org/10.3390/ani9050227>.
6. Chen J, Xu Q, Li Y, Tang Z, Sun W, Zhang X, et al. Comparative effects of dietary supplementations with sodium butyrate, medium-chain fatty acids, and n-3 polyunsaturated fatty acids in late

- pregnancy and lactation on the reproductive performance of sows and growth performance of suckling piglets. *J Anim Sci.* 2019;97(10):4256–67. <https://doi.org/10.1093/jas/skz284>.
7. Holen JP, Woodworth JC, Tokach MD, Goodband RD, DeRouchey JM, Gebhardt JT, et al. Evaluation of essential fatty acids in lactating sow diets on sow reproductive performance, colostrum and milk composition, and piglet survivability. *J Anim Sci.* 2022;100(6):skac167. <https://doi.org/10.1093/jas/skac167>.
 8. Lavery A, Lawlor PG, Miller HM, Magowan E. The Effect of Dietary Oil Type and Energy Intake in Lactating Sows on the Fatty Acid Profile of Colostrum and Milk, and Piglet Growth to Weaning. *Anim (Basel).* 2019;9(12):1092. <https://doi.org/10.3390/ani9121092>.
 9. Zhao M, Jiang Z, Cai H, Li Y, Mo Q, Deng L, et al. Modulation of the Gut Microbiota during High-Dose Glycerol Monolaurate-Mediated Amelioration of Obesity in Mice Fed a High-Fat Diet. *mBio.* 2020;11(2):e00190-20. <https://doi.org/10.1128/mBio.00190-20>.
 10. Zhang H, Wei H, Cui Y, Zhao G, Feng F. Antibacterial interactions of monolaurin with commonly used antimicrobials and food components. *J Food Sci.* 2009;74(7):M418-21. <https://doi.org/10.1111/j.1750-3841.2009.01300.x>.
 11. Yu D, Jiang Q, Xu Y, Xia W. The shelf life extension of refrigerated grass carp (*Ctenopharyngodon idellus*) fillets by chitosan coating combined with glycerol monolaurate. *Int J Biol Macromol.* 2017;101:448–54. <https://doi.org/10.1016/j.ijbiomac.2017.03.038>.
 12. Fosdick MG, Chheda PR, Tran PM, Wolff A, Peralta R, Zhang MY, et al. Suppression of human T cell activation by derivatives of glycerol monolaurate. *Sci Rep.* 2021;11(1):8943. <https://doi.org/10.1038/s41598-021-88584-y>.
 13. Jackman JA, Hakobyan A, Zakaryan H, Elrod CC. Inhibition of African swine fever virus in liquid and feed by medium-chain fatty acids and glycerol monolaurate. *J Anim Sci Biotechnol.* 2020;11(1):114. <https://doi.org/10.1186/s40104-020-00517-3>.
 14. Fortuoso BF, Dos Reis JH, Gebert RR, Barreta M, Griss LG, Casagrande RA, et al. Glycerol monolaurate in the diet of broiler chickens replacing conventional antimicrobials: Impact on health, performance and meat quality. *Microb Pathog.* 2019;129:161–7. <https://doi.org/10.1016/j.micpath.2019.02.005>.
 15. Li L, Wang H, Zhang N, Zhang T, Ma Y. Effects of α -glycerol monolaurate on intestinal morphology, nutrient digestibility, serum profiles, and gut microbiota in weaned piglets. *J Anim Sci.* 2022;100(3):skac046. <https://doi.org/10.1093/jas/skac046>.
 16. Cui Z, Wang X, Hou Z, Liao S, Qi M, Zha A, et al. Low-Protein Diet Supplemented with Medium-Chain Fatty Acid Glycerides Improves the Growth Performance and Intestinal Function in Post-Weaning Piglets. *Animals.* 2020;10(10):1852. <https://doi.org/10.3390/ani10101852>.
 17. NRC. Nutrient requirements of swine, 11th rev. ed. Washington, DC: NationalAcademy Press; 2012.
 18. Che LQ, Zhan LM, Fang ZF, Lin Y, Yan TH, Wu D. Effects of dietary protein sources on growth performance and immune response of weanling pigs. *Livest Sci.* 2012;148(1–2). <https://doi.org/10.1016/j.livsci.2012.04.019>.

19. Sutherland MA, Niekamp SR, Rodriguez-Zas SL, Salak-Johnson JL. Impacts of chronic stress and social status on various physiological and performance measures in pigs of different breeds. *J Anim Sci.* 2006;84(3):588–96. <https://doi.org/10.2527/2006.843588x>.
20. Kong L, Wang Z, Xiao C, Zhu Q, Song Z. Glycerol Monolaurate Ameliorated Intestinal Barrier and Immunity in Broilers by Regulating Intestinal Inflammation, Antioxidant Balance, and Intestinal Microbiota. *Front Immunol.* 2021;12:713485. <https://doi.org/10.3389/fimmu.2021.713485>.
21. Caporaso JG, Kuczynski J, Stombaugh J, Bittinger K, Bushman FD, Costello EK, et al. QIIME allows analysis of high-throughput community sequencing data. *Nat Methods.* 2010;7(5):335–6. <https://doi.org/10.1038/nmeth.f.303>.
22. Young JM, Bergsma R, Knol EF, Patience JF, Dekkers JC. Effect of selection for residual feed intake during the grow/finish phase of production on sow reproductive performance and lactation efficiency. *J Anim Sci.* 2016;94(10):4120–32. <https://doi.org/10.2527/jas.2015-0130>.
23. Sulabo RC, Jacela JY, Tokach MD, Dritz SS, Goodband RD, DeRouchey JM, et al. Effects of lactation feed intake and creep feeding on sow and piglet performance. *J Anim Sci.* 2010;88(9):3145–53. <https://doi.org/10.2527/jas.2009-2131>.
24. Świątkiewicz M, Hanczakowska E, Okoń K, Kowalczyk P, Grela ER. Effect of Maternal Diet and Medium Chain Fatty Acids Supplementation for Piglets on Their Digestive Tract Development, Structure, and Chyme Acidity as Well as Performance and Health Status. *Anim (Basel).* 2020;10(5):834. <https://doi.org/10.3390/ani10050834>.
25. Gatlin LA, Odle J, Soede J, Hansent JA. Dietary medium- or long-chain triglycerides improve body condition of lean-genotype sows and increase suckling pig growth. *J Anim Sci.* 2002;80(1):38–44. <https://doi.org/10.2527/2002.80138x>.
26. Rosero DS, van Heugten E, Odle J, Arellano C, Boyd RD. Response of the modern lactating sow and progeny to source and level of supplemental dietary fat during high ambient temperatures. *J Anim Sci.* 2012;90(8):2609–19. <https://doi.org/10.2527/jas.2012-4242>.
27. Rosero DS, van Heugten E, Odle J, Cabrera R, Arellano C, Boyd RD. Sow and litter response to supplemental dietary fat in lactation diets during high ambient temperatures. *J Anim Sci.* 2012;90(2):550–9. <https://doi.org/10.2527/jas.2011-4049>.
28. Rosero DS, Boyd RD, McCulley M, Odle J, van Heugten E. Essential fatty acid supplementation during lactation is required to maximize the subsequent reproductive performance of the modern sow. *Anim Reprod Sci.* 2016;168:151–63. <https://doi.org/10.1016/j.anireprosci.2016.03.010>.
29. Wagstrom EA, Yoon KJ, Zimmerman JJ. Immune components in porcine mammary secretions. *Viral Immunol.* 2000;13(3):383–97. <https://doi.org/10.1089/08828240050144699>.
30. Devillers N, Le Dividich J, Prunier A. Influence of colostrum intake on piglet survival and immunity. *Animal.* 2011;5(10):1605–12. <https://doi.org/10.1017/S175173111100067X>.
31. Jensen AR, Elnif J, Burrin DG, Sangild PT. Development of intestinal immunoglobulin absorption and enzyme activities in neonatal pigs is diet dependent. *J Nutr.* 2001;131(12):3259–65. <https://doi.org/10.1093/jn/131.12.3259>.

32. Zhang MS, Sandouk A, Houtman JC. Glycerol Monolaurate (GML) inhibits human T cell signaling and function by disrupting lipid dynamics. *Sci Rep.* 2016;6:30225. <https://doi.org/10.1038/srep30225>.
33. Ma C, Liu Y, Liu S, Lévesque CL, Zhao F, Yin J, et al. Branched chain amino acids alter fatty acid profile in colostrum of sows fed a high fat diet. *J Anim Sci Biotechnol.* 2020;11:9. <https://doi.org/10.1186/s40104-019-0423-9>.
34. Vlaeminck B, Fievez V, Demeyer D, Dewhurst RJ. Effect of forage:concentrate ratio on fatty acid composition of rumen bacteria isolated from ruminal and duodenal digesta. *J Dairy Sci.* 2006;89(7):2668–78. [https://doi.org/10.3168/jds.S0022-0302\(06\)72343-8](https://doi.org/10.3168/jds.S0022-0302(06)72343-8).
35. Massart-Leën AM, Roets E, Peeters G, Verbeke R. Propionate for fatty acid synthesis by the mammary gland of the lactating goat. *J Dairy Sci.* 1983;66(7):1445–54. [https://doi.org/10.3168/jds.S0022-0302\(83\)81958-4](https://doi.org/10.3168/jds.S0022-0302(83)81958-4).
36. Mo Q, Liu T, Fu A, Ruan S, Zhong H, Tang J, et al. Novel Gut Microbiota Patterns Involved in the Attenuation of Dextran Sodium Sulfate-Induced Mouse Colitis Mediated by Glycerol Monolaurate via Inducing Anti-inflammatory Responses. *mBio.* 2021;12(5):e0214821. <https://doi.org/10.1128/mBio.02148-21>.
37. Zhang LS, Liang S, Zong MH, Yang JG, Lou WY. Microbial synthesis of functional odd-chain fatty acids: a review. *World J Microbiol Biotechnol.* 2020;36(3):35. <https://doi.org/10.1007/s11274-020-02814-5>.
38. de Quelen F, Boudry G, Mourot J. Linseed oil in the maternal diet increases long chain-PUFA status of the foetus and the newborn during the suckling period in pigs. *Br J Nutr.* 2010;104(4):533–43. <https://doi.org/10.1017/S0007114510000772>.
39. Gerster H. Can adults adequately convert alpha-linolenic acid (18:3n-3) to eicosapentaenoic acid (20:5n-3) and docosahexaenoic acid (22:6n-3)? *Int J Vitam Nutr Res.* 1998;68(3):159–73.
40. Yao W, Li J, Wang JJ, Zhou W, Wang Q, Zhu R, et al. Effects of dietary ratio of n-6 to n-3 polyunsaturated fatty acids on immunoglobulins, cytokines, fatty acid composition, and performance of lactating sows and suckling piglets. *J Anim Sci Biotechnol.* 2012;3(1):43. <https://doi.org/10.1186/2049-1891-3-43>.
41. Lauridsen C, Stagsted J, Jensen SK. n-6 and n-3 fatty acids ratio and vitamin E in porcine maternal diet influence the antioxidant status and immune cell eicosanoid response in the progeny. *Prostaglandins Other Lipid Mediat.* 2007;84(1–2):66–78. <https://doi.org/10.1016/j.prostaglandins.2007.04.003>.
42. Huber LA, Hooda S, Fisher-Heffernan RE, Karrow NA, de Lange CFM. Effect of reducing the ratio of omega-6-to-omega-3 fatty acids in diets of low protein quality on nursery pig growth performance and immune response. *J Anim Sci.* 2018;96(10):4348–59. <https://doi.org/10.1093/jas/sky296>.
43. Lin Y, Cheng X, Mao J, Wu D, Ren B, Xu SY, et al. Effects of different dietary n-6/n-3 polyunsaturated fatty acid ratios on boar reproduction. *Lipids Health Dis.* 2016;15:31. <https://doi.org/10.1186/s12944-016-0193-8>.

44. Gresse R, Chaucheyras-Durand F, Fleury MA, Van de Wiele T, Forano E, Blanquet-Diot S. Gut Microbiota Dysbiosis in Postweaning Piglets: Understanding the Keys to Health. *Trends Microbiol.* 2017;25(10):851–73. <https://doi.org/10.1016/j.tim.2017.05.004>.
45. Chen L, Xu Y, Chen X, Fang C, Zhao L, Chen F. The Maturing Development of Gut Microbiota in Commercial Piglets during the Weaning Transition. *Front Microbiol.* 2017;8:1688. <https://doi.org/10.3389/fmicb.2017.01688>.
46. Rowan F, Docherty NG, Murphy M, Murphy B, Calvin Coffey J, O'Connell PR. *Desulfovibrio* bacterial species are increased in ulcerative colitis. *Dis Colon Rectum.* 2010;53(11):1530–6. <https://doi.org/10.1007/DCR.0b013e3181f1e620>.
47. Douglas GM, Hansen R, Jones CMA, Dunn KA, Comeau AM, Bielawski JP, et al. Multi-omics differentially classify disease state and treatment outcome in pediatric Crohn's disease. *Microbiome.* 2018;6(1):13. <https://doi.org/10.1186/s40168-018-0398-3>.
48. Yang J, Qian K, Wang C, Wu Y. Roles of Probiotic Lactobacilli Inclusion in Helping Piglets Establish Healthy Intestinal Inter-environment for Pathogen Defense. *Probiotics Antimicrob Proteins.* 2018;10(2):243–50. <https://doi.org/10.1007/s12602-017-9273-y>.
49. Bian G, Ma S, Zhu Z, Su Y, Zoetendal EG, Mackie R, et al. Age, introduction of solid feed and weaning are more important determinants of gut bacterial succession in piglets than breed and nursing mother as revealed by a reciprocal cross-fostering model. *Environ Microbiol.* 2016;18(5):1566–77. <https://doi.org/10.1111/1462-2920.13272>.

Tables

Table 1. Ingredient composition and calculated nutrient concentrations of gestation and lactation basal diets (as-fed basis)

Items	Late gestation	Lactation
Ingredient composition, %		
Corn	57.50	61.50
Soybean meal	15.50	20.50
Wheat bran	20.00	10.00
Fish meal	2.00	2.00
Soybean oil	2.00	3.00
Limestone	1.00	1.00
Dicalcium phosphate	1.05	1.00
Salt	0.30	0.30
L-Lysine-HCL (78%)	-	0.05
Choline chloride	0.15	0.15
Premix ¹	0.50	0.50
Total	100.00	100.00
Nutrient concentrations ²		
Digestible energy, MJ/kg	14.61	15.09
Crude protein, %	16.21	17.01
SID Lysine, %	0.85	0.98
Calcium, %	0.93	0.93
Total phosphorus, %	0.73	0.67
Available phosphorus, %	0.52	0.50

¹The premix provided the following per kg of the diet: Vitamin A, 25,000 IU; Vitamin D₃, 5,000 IU; Vitamin E, 12.5 IU; Vitamin K₃, 2.5 mg; Thiamin, 8.0 mg; Pyridoxine 3.0 mg; Vitamin B₁₂, 15 µg; Riboflavin, 6.0 mg; Niacin, 17.5 mg; D-Pantothenic acid, 12.5 mg; Folic acid, 0.25 mg; Biotin, 0.1 mg; Choline chloride, 0.4 mg; Fe, 165 mg; Cu, 16.0 mg; Zn, 165 mg; Mn, 30 mg; I, 0.3 mg; Se, 0.3 mg

² Calculated values

Table 2. Effects of α-Glycerol Monolaurate (α-GML) supplementation on reproductive performance of sows

Items	Dietary α -GML level (mg/kg)				SEM	<i>P</i> -value		
	0	500	1000	2000		Treatment	Linear	Quadratic
Sows								
ADFI, kg/d	6.12	6.21	6.38	6.36	0.05	0.20	0.07	0.33
Backfat thickness on day 110 of gestation	19.67	19.38	19.81	19.94	0.56	0.98	0.98	0.94
Backfat loss, mm	1.72	1.67	1.76	1.39	0.28	0.99	0.62	0.76
Weaning estrus interval, day	4.65	4.95	5.05	5.17	0.12	0.47	0.15	0.29
Litter size, n								
At weaning	11.60	11.95	11.86	11.71	0.11	0.66	0.95	0.27
Litter weight, kg								
At birth	13.81	16.99	16.25	16.51	0.41	< 0.05	0.08	< 0.05
At weaning	68.23	75.08	75.97	72.95	1.14	0.06	0.28	< 0.05
Piglets weight, kg								
At birth, kg	1.27	1.33	1.29	1.27	0.02	0.57	0.68	0.38
At weaning, kg	5.89	6.23	6.40	6.20	0.08	0.13	0.21	< 0.05

Values are means with SEM, n = 20 sows/treatment group

ADFI, average daily feed intake

Table 3. Effects of α -Glycerol Monolaurate (α -GML) supplementation during late gestation and lactation on immunoglobulin levels in colostrum and milk of sows

Items	Dietary α -GML level (mg/kg)				SEM	<i>P</i> -value		
	0	500	1000	2000		Treatment	Linear	Quadratic
Colostrum								
IgA, mg/mL	11.61	13.04	13.78	11.25	0.30	< 0.05	0.46	< 0.05
IgG, mg/mL	66.76	71.18	71.28	70.42	0.67	< 0.05	0.13	< 0.05
IgM, mg/mL	28.55	28.63	29.71	30.15	0.46	0.55	0.16	0.38
Milk								
IgA, mg/mL	3.02	3.29	3.38	2.95	0.09	0.30	0.29	< 0.05
IgG, mg/mL	27.69	31.41	33.27	30.97	0.76	0.06	< 0.05	< 0.05
IgM, mg/mL	4.92	5.45	4.97	4.99	0.09	0.14	0.27	0.25

Values are means with SEM, n = 6 sows/treatment group

Table 4. Effects of α -Glycerol Monolaurate (α -GML) supplementation during late gestation and lactation on fatty acid profiles in colostrum of sows

Items	Dietary α -GML level (mg/kg)				SEM	<i>P</i> value		
	0	500	1,000	2,000		Treatment	Linear	Quadratic
Higher								
C12:0	0.04	0.08	0.12	0.23	0.02	< 0.05	< 0.05	< 0.05
C15:0	0.15	0.15	0.16	0.19	0.01	< 0.05	< 0.05	< 0.05
C17:0	0.24	0.25	0.25	0.28	0.01	0.07	< 0.05	< 0.05
C18:2n6c	29.69	28.44	28.67	31.89	0.50	< 0.05	< 0.05	< 0.05
C18:3n3	2.07	2.25	2.18	2.49	0.05	< 0.05	< 0.05	< 0.05
C20:3n6	0.61	0.68	0.70	0.64	0.01	< 0.05	0.53	< 0.05
C20:5n3	0.23	0.22	0.25	0.26	0.01	0.09	< 0.05	0.11
C24:0	0.17	0.16	0.17	0.21	0.01	< 0.05	< 0.05	< 0.05
C22:6n3	0.61	0.59	0.62	0.70	0.02	0.08	< 0.05	< 0.05
Lower								
C8:0	0.12	0.14	0.09	0.05	0.02	0.11	< 0.05	0.08
Unchanged								
C6:0	0.02	0.02	0.02	0.02	0.00	0.50	0.86	0.96
C10:0	0.01	0.01	0.01	0.01	0.00	0.95	0.92	0.88
C14:0	1.82	1.68	1.56	1.72	0.04	0.23	0.51	0.11
C14:1	0.03	0.03	0.02	0.03	0.00	0.53	0.50	0.46
C16:0	22.24	21.34	21.57	21.38	0.18	0.26	0.18	0.24
C16:1	3.10	2.77	2.67	2.79	0.08	0.24	0.25	0.12
C18:0	4.65	4.48	4.76	4.48	0.06	0.20	0.50	0.61
C18:1n9c	32.02	33.29	32.30	31.23	0.42	0.41	0.30	0.34
C20:0	0.15	0.16	0.15	0.16	0.00	0.36	0.34	0.54
C20:1	0.26	0.37	0.37	0.32	0.02	0.12	0.50	0.07
C21:0	0.33	0.28	0.32	0.31	0.01	0.45	0.88	0.79
C20:4n6	1.15	1.00	0.97	1.02	0.04	0.35	0.34	0.20
C20:3n3	0.15	0.16	0.16	0.17	0.00	0.13	0.09	0.08
C22:0	0.12	0.12	0.12	0.13	0.00	0.66	0.63	0.44

C22:1n9	0.25	0.25	0.23	0.27	0.01	0.27	0.23	0.22
C22:2	0.03	0.03	0.03	0.03	0.00	0.08	0.08	0.21
C23:0	0.07	0.07	0.07	0.07	0.00	0.51	0.19	0.32
C24:1	0.26	0.25	0.26	0.26	0.01	0.86	0.58	0.81
n-3 PUFA	3.06	3.23	3.21	3.61	0.06	< 0.05	< 0.05	< 0.05
n-6 PUFA	31.20	29.76	29.98	33.25	0.50	< 0.05	0.06	< 0.05
n-6: n-3 PUFA ratio	10.29	9.24	9.40	9.25	0.23	0.31	0.19	0.24

Values are means with SEM, n = 6 sows/treatment group

Table 5. Effects of α -Glycerol Monolaurate (α -GML) supplementation during late gestation and lactation on fatty acid profiles in milk of sows

Items	Dietary α -GML level (mg/kg)				SEM	<i>P</i> value		
	0	500	1,000	2,000		Treatment	Linear	Quadratic
Higher								
C12:0	0.36	0.46	0.61	0.77	0.04	<0.05	<0.05	<0.05
C18:3n3	1.40	1.54	1.61	1.58	0.03	<0.05	<0.05	<0.05
C20:5n3	0.19	0.21	0.23	0.24	0.01	<0.05	<0.05	<0.05
C22:0	0.05	0.06	0.06	0.04	0.00	0.10	0.46	<0.05
C23:0	0.02	0.02	0.02	0.02	0.00	0.15	<0.05	0.06
C24:0	0.09	0.10	0.12	0.12	0.01	0.18	<0.05	0.09
C24:1	0.08	0.09	0.10	0.10	0.00	0.13	<0.05	0.06
Lower								
C8:0	0.05	0.04	0.04	0.04	0.00	0.06	<0.05	<0.05
C10:0	0.32	0.12	0.23	0.20	0.01	<0.05	<0.05	<0.05
C14:0	4.33	3.71	3.71	3.79	0.04	<0.05	<0.05	<0.05
C14:1	4.33	3.71	3.71	3.79	0.04	<0.01	<0.05	0.09
C20:3n6	0.09	0.08	0.07	0.09	0.00	<0.05	0.68	<0.05
Unchanged								
C6:0	0.05	0.05	0.06	0.05	0.00	<0.05	0.65	0.14
C15:0	0.11	0.09	0.11	0.10	0.00	0.09	0.85	0.71
C16:0	34.65	32.29	33.89	32.08	0.38	<0.05	0.06	0.17
C16:1	12.69	10.23	12.84	11.74	0.46	<0.05	0.90	0.89
C17:0	0.13	0.16	0.14	0.15	0.01	0.33	0.49	0.56
C18:0	3.69	3.84	3.48	3.60	0.05	0.06	0.23	0.43
C18:1n9c	22.76	26.14	22.56	25.34	0.71	0.18	0.45	0.76
C18:2n6c	19.20	17.88	18.01	18.34	0.22	0.12	0.34	0.08
C20:0	0.12	0.12	0.12	0.13	0.00	0.48	0.39	0.64
C20:1	0.21	0.21	0.18	0.20	0.01	0.77	0.65	0.73
C21:0	0.30	0.25	0.25	0.28	0.01	0.28	0.67	0.18
C20:4n6	0.35	0.39	0.33	0.40	0.01	0.23	0.36	0.50

C20:3n3	0.06	0.06	0.05	0.07	0.00	0.15	0.23	0.23
C22:1n9	0.05	0.07	0.05	0.06	0.00	0.08	0.35	0.64
C22:2	0.04	0.04	0.04	0.05	0.00	0.24	0.13	0.26
C22:6n3	0.23	0.30	0.25	0.28	0.01	<0.05	<0.05	<0.05
n-3 PUFA	1.88	2.11	2.13	2.18	0.30	<0.05	<0.05	<0.05
n-6 PUFA	19.68	18.38	18.45	18.88	0.22	0.12	0.38	0.08
n-6: n-3 PUFA ratio	10.51	8.72	8.66	8.68	0.22	<0.05	<0.05	<0.05

Values are means with SEM, n = 6 sows/treatment group

Table 6. Effects of α -Glycerol Monolaurate (α -GML) supplementation during late gestation and lactation on serum immunoglobulin levels on day 21 of piglets

Items	Dietary α -GML level (mg/kg)				SEM	<i>P</i> -value		
	0	500	1000	2000		Treatment	Linear	Quadratic
IgA, μ g/mL	10.53	10.88	11.01	10.63	0.22	0.87	0.07	0.17
IgG, mg/mL	5.03	5.55	5.48	5.19	0.11	0.29	0.59	0.07
IgM, μ g/mL	5.04	5.23	6.70	5.43	0.248	0.07	0.73	0.08

Values are means with SEM, n = 6 piglets/treatment group

Figures

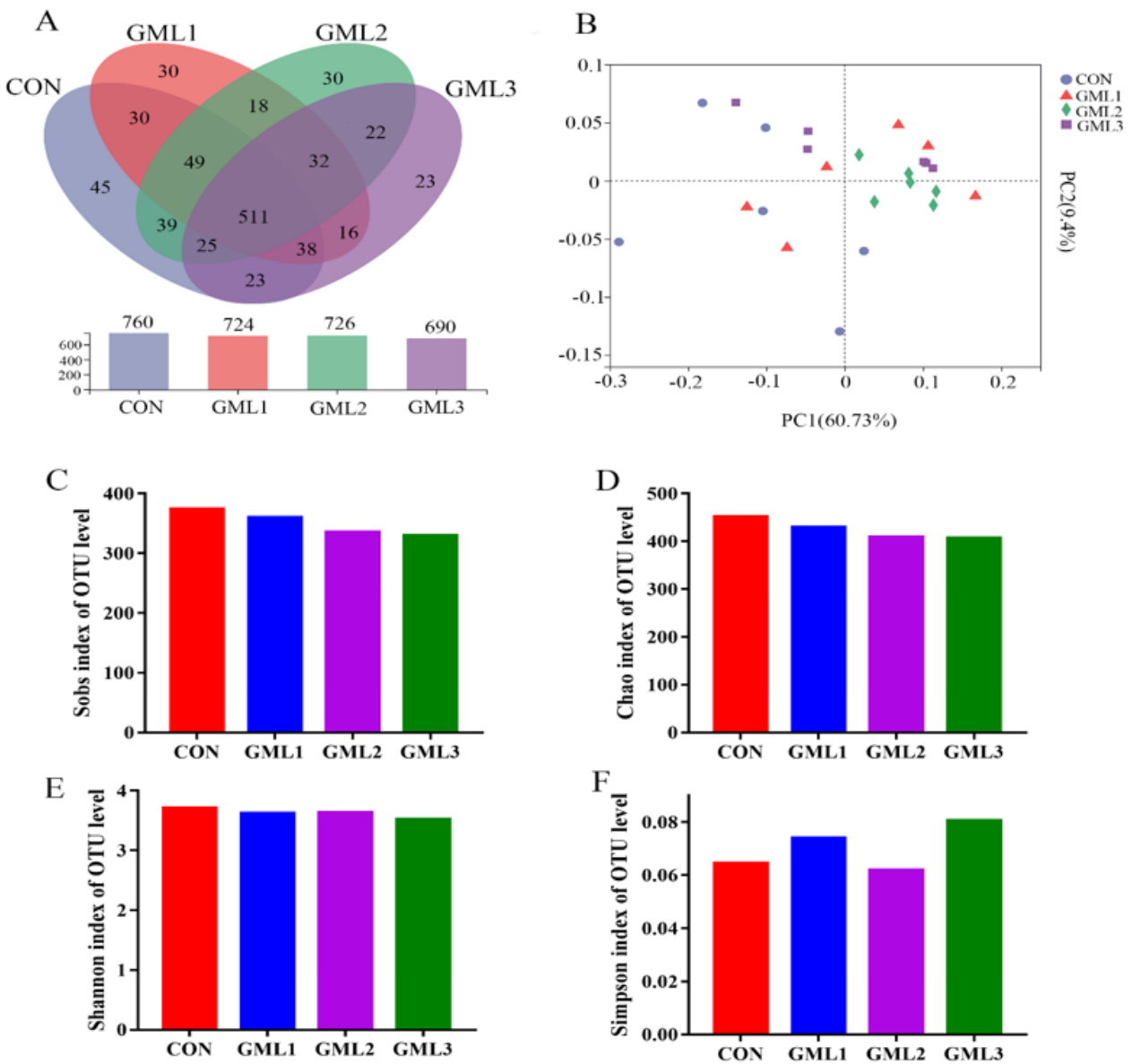


Figure 1

Fecal microbial composition and diversity of suckling piglets. A, The bacterial operational taxonomic units (OUTs) community composition of the feces in suckling piglets; B, β -diversity analysis was performed using the unweighted version of the UniFrac-based PcoA; C-F α -diversity analysis based on indices of Sobs, Chao, Shannon, and Simpson. Data were means \pm SD (n = 6); CON, control group; GML1, 500 mg/kg α -GML supplemental group; GML2, 1000 mg/kg α -GML supplemental group; GML3, 2000 mg/kg α -GML supplemental group.

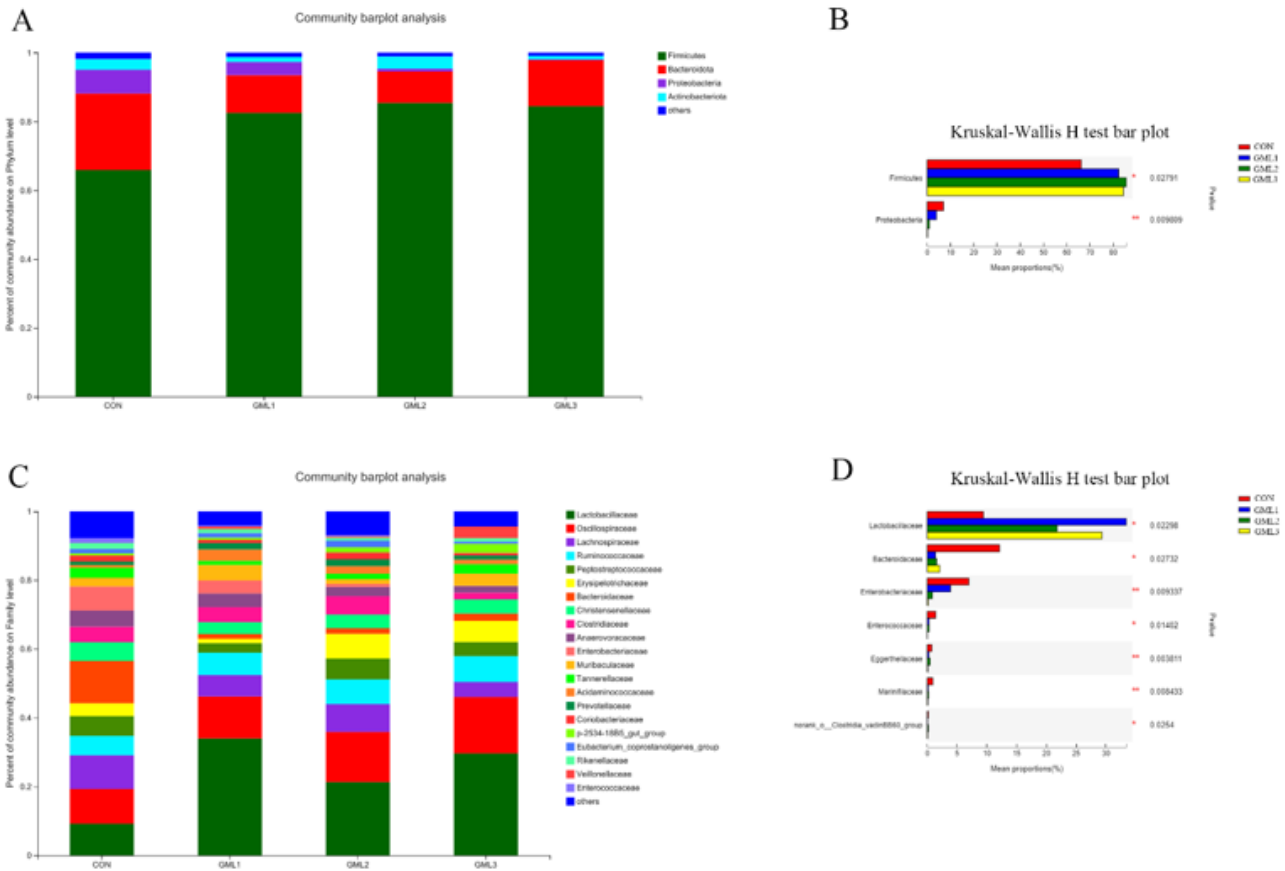


Figure 2

Differences in fecal microbial phylum level and genus level of suckling piglets. A and B, Fecal microbial composition of suckling piglets at phylum level; C and D, Fecal microorganisms of suckling piglets differ at the family level. Data were means \pm SD (n = 6); * $P < 0.05$ and ** $P < 0.01$ compared with the CON group. CON, control group; GML1, 500 mg/kg α -GML supplemental group; GML2, 1000 mg/kg α -GML supplemental group; GML3, 2000 mg/kg α -GML supplemental group.